

# Internal Sounders

## Product Overview

The Inter range of internal sounders are designed for use in domestic applications and are available in three versions:

- High level sounder
- High (alarm) and low level (entry/exit) sounder with strobe
- High (alarm) and low level (entry/exit) sounder

They are also available with or without an internal battery for SAB or direct operation (see table).

The sound output for all models is 110dB(A). They have a low current consumption and feature engineer mode for silent start up.

The devices have a modern, stylish polycarbonate cover which can be screen printed with a company logo if required (not 500(S) model).

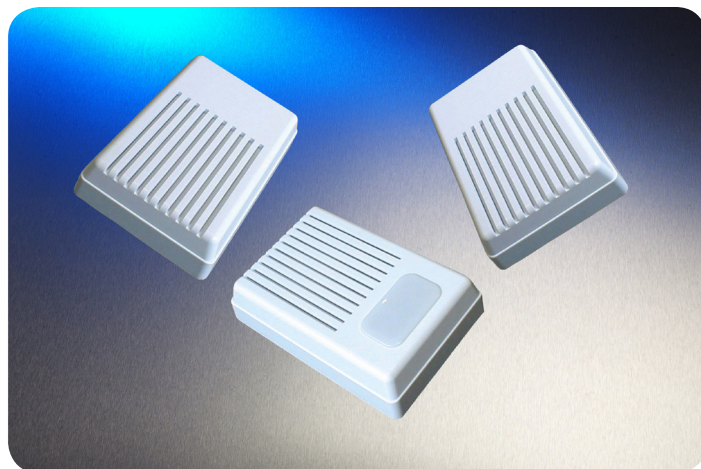
## Features

- 12V dc operation
- Grade 2 & 3 options
- Environmental class II
- Tough polycarbonate cover and backplate
- Front and rear tamper
- Independent low level entry/exit sound output (500/600)
- Selectable 15m timer for sounder output
- Integral strobe (500)
- Selectable siren tones (500/600)
- Screen printing available on all models except 500(S)
- 3 year warranty

## Approvals & Certification

Inter sounders meet the requirements of:

- PD6662:2010
- EN50131-1:2006
- EN50131-4:2009



Internal Sounder Range

## Part Numbers

Part no	Grade	Strobe	Description
INT400	3	N	High level sounder
INT400(S)	2		High level sounder with NiCad battery for SAB operation
INT500	3	Y	High & low level sounder with strobe
INT500(S)	2		High & low level sounder with strobe and NiCad battery for SAB operation
INT600	3	N	High & low level sounder
INT600(S)	2		High & low level sounder with NiCad battery for SAB operation

## Technical Information

Full SAB option                      6V NiCd (150mAh)

### Sounder

Sound out (at 1m)                      110dB(A)  
 Input voltage                              10-14V dc (12V dc nom)  
 Standby Current                          15mA

### Strobe

Flash rate                                      1 per second  
 Input voltage                                  12V dc

## Product Dimensions

H x W x D: 110mm x 160mm x 40mm

